

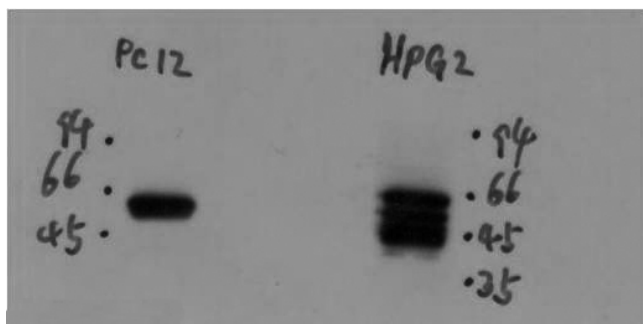


# Peripherin Mouse mAb(3H1)

<b>Catalog No</b>	YP-Ab-04781
<b>Isotype</b>	IgG
<b>Reactivity</b>	Human;Rat
<b>Applications</b>	WB
<b>Gene Name</b>	PRPH NEF4 PRPH1
<b>Protein Name</b>	Peripherin
<b>Immunogen</b>	Synthesized peptide derived from human Peripherin
<b>Specificity</b>	This antibody detects endogenous levels of Peripherin at H,R
<b>Formulation</b>	Liquid in PBS containing 50% glycerol, 0.5% BSA and 0.12% sodium azide.
<b>Source</b>	Monoclonal, Mouse
<b>Purification</b>	The antibody was affinity-purified from mouse ascites by affinity-chromatography using specific immunogen.
<b>Dilution</b>	WB 1:1000-2000
<b>Concentration</b>	1 mg/ml
<b>Purity</b>	≥90%
<b>Storage Stability</b>	-20°C/1 year
<b>Synonyms</b>	Peripherin (Neurofilament 4)
<b>Observed Band</b>	55kD
<b>Cell Pathway</b>	Cytoplasm, cytoskeleton . Cell projection, axon . Perikaryon .
<b>Tissue Specificity</b>	Expressed in the neurons of the outer hair cells in the organ of Corti and to a lesser extent in type I spiral ganglion cells.
<b>Function</b>	
<b>Background</b>	Peripherin(PRPH) Homo sapiens This gene encodes a cytoskeletal protein found in neurons of the peripheral nervous system. The encoded protein is a type III intermediate filament protein with homology to other cytoskeletal proteins such as desmin, and is a different protein that the peripherin found in photoreceptors. Mutations in this gene have been associated with susceptibility to amyotrophic lateral sclerosis.
<b>matters needing attention</b>	Avoid repeated freezing and thawing!
<b>Usage suggestions</b>	This product can be used in immunological reaction related experiments. For more information, please consult technical personnel.



## Products Images



Western blot analysis of 1) PC12 Cell Lysate, 2) HepG2 Cell Lysate using Mouse mAb diluted at 1:2,000.